

**DO NOT SCALE**

THE CONTRACTOR SHALL CHECK AND VERIFY ALL DIMENSIONS IN THIS DRAWING TO BE ACCURATE TO THE DIMENSIONS SHOWN ON THE DRAWING. DIMENSIONS SHALL BE TO FACE UNLESS OTHERWISE NOTED.

THE DRAWING AND THE WORKS COVERED ARE THE PROPERTY OF HAWORTH TOMPKINS AND SHALL REMAIN THE PROPERTY OF HAWORTH TOMPKINS.

**NOTES**

- 1. TO BE IN ACCORDANCE WITH ALL LOCAL, STATE AND FEDERAL REGULATIONS AND ALL APPLICABLE BUILDING CODES AND ALL PARTS OF THE CANADIAN BUILDCODE.
- 2. ALL DIMENSIONS SHALL BE TO FACE UNLESS OTHERWISE NOTED.
- 3. THE CONTRACTOR SHALL VERIFY ALL DIMENSIONS TO BE ACCURATE TO THE DIMENSIONS SHOWN ON THE DRAWING.
- 4. THE CONTRACTOR SHALL VERIFY ALL DIMENSIONS TO BE ACCURATE TO THE DIMENSIONS SHOWN ON THE DRAWING.

- KEY - RLS**
- 1. Filtered Factory Unit
  - 2. SNE Unit
  - 3. Kitchenets - WCs
  - 4. Commercial circulation
  - 5. Riser
  - 6. Staircase
  - 7. Riser
  - 8. Landing bay area

- 1. Sprinkler tanks
- 2. Proposed painted brick substation
- 3. Fire store
- 4. Long stay cycle store (total of 50 long stay cycle spaces)
- 5. Long stay cycle store (total of 10 long stay cycle spaces)
- 6. Emergency generator within enclosure
- 7. Cycle loading area
- 8. Cycle storage
- 9. Escalator lift
- 10. Escalator lift
- 11. Escalator lift
- 12. Escalator lift
- 13. Escalator lift
- 14. Escalator lift
- 15. Escalator lift
- 16. Escalator lift
- 17. Escalator lift
- 18. Escalator lift
- 19. Escalator lift
- 20. Escalator lift
- 21. Escalator lift
- 22. Escalator lift
- 23. Escalator lift
- 24. Escalator lift
- 25. Escalator lift
- 26. Escalator lift
- 27. Escalator lift
- 28. Escalator lift
- 29. Escalator lift
- 30. Escalator lift
- 31. Escalator lift
- 32. Escalator lift
- 33. Escalator lift
- 34. Escalator lift
- 35. Escalator lift
- 36. Escalator lift
- 37. Escalator lift
- 38. Escalator lift
- 39. Escalator lift
- 40. Escalator lift
- 41. Escalator lift
- 42. Escalator lift
- 43. Escalator lift
- 44. Escalator lift
- 45. Escalator lift
- 46. Escalator lift
- 47. Escalator lift
- 48. Escalator lift
- 49. Escalator lift
- 50. Escalator lift

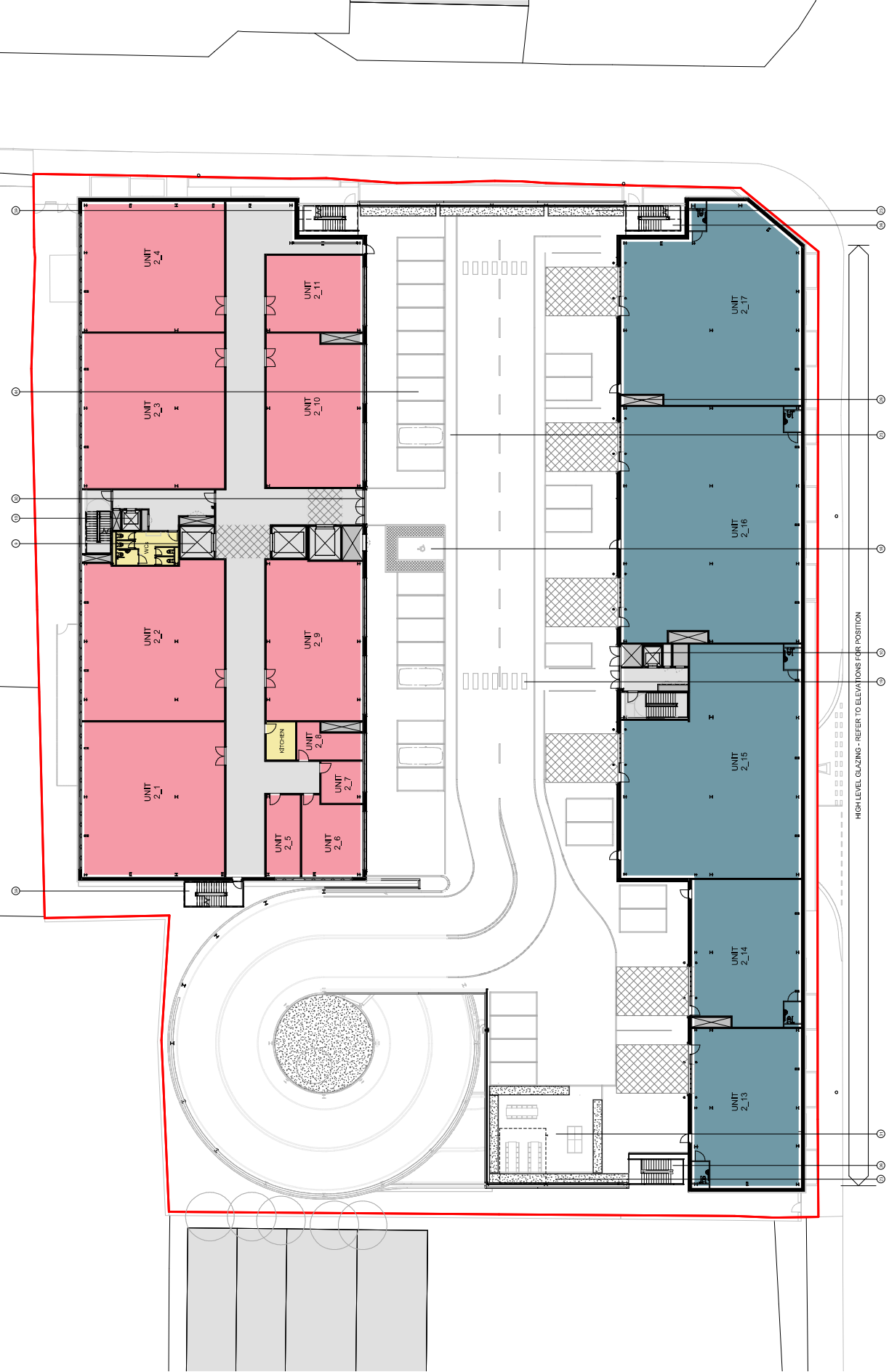


REV	DATE	DESCRIPTION
D	26/10/20	Issued for Bidding
C	09/11/20	Revised for Bidding
B	12/11/20	Revised for Bidding
A	23/10/20	Issued for Bidding

**HaworthTompkins**  
 14100 122nd Avenue, Suite 100, Richmond, BC V6V 2E9, Canada  
 Tel: 604.273.1234 | Fax: 604.273.1235 | Email: info@haworthtompkins.com

**1961 INTENSIFYING BARKING**

PROJ: 1961 INTENSIFYING BARKING  
 SHEET: Proposed Second Floor Lower Plan  
 TITLE: BFD1961-INT-11-02-PR-A-011003  
 DATE: 29/10/20  
 DRAWN: 12006841  
 CHECKED: [Signature]  
 APPROVED: [Signature]  
 STATUS: [ ]  
 COORDINATION: [ ]



HIGH LEVEL GLAZING - REFER TO ELEVATIONS FOR POSITION